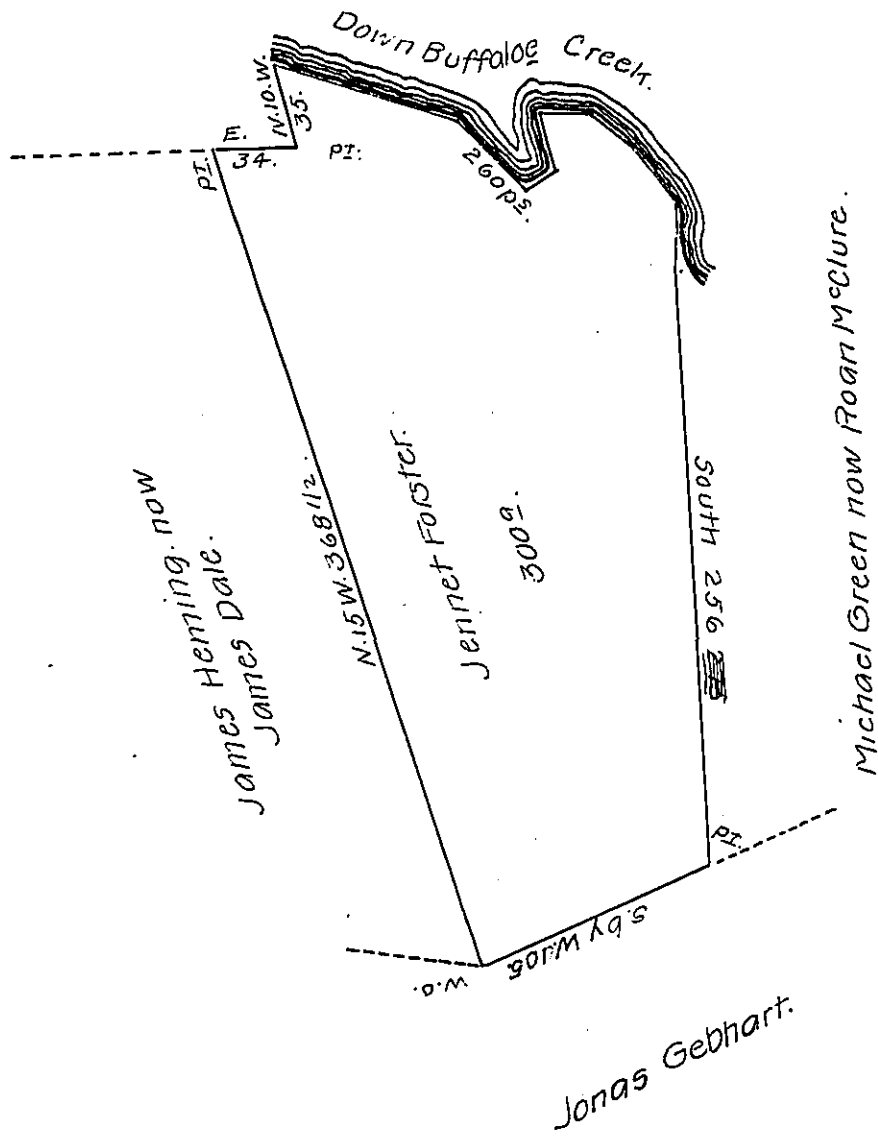


Courses & distances
Down Buffalo Creek

- S. 70 E. 80.
- S. 45 E. 40
- N. 62 E. 13.
- N. 10 W. 25
- S. 81 E. 19
- S. 54 E. 22
- S. 32 E. 28
- S. 14 E. 14
- South 19

260.



Situate in Buffalo township Union (late Berks) County surveyed the 4th day of June 1833 by virtue of an Order granted to Jennet Forster dated the 3^d day of April 1769 N^o 1646 containing three hundred Acres with the Usual Allowance of Six Per Cent. &c.

Note The same tract of land was surveyed the 12th day of August 1769 for Thomas Forster in pursuance of his order dated the 3^d day of April 1769 N^o 675. — And now owned and occupied by James Dale in right of the said Thomas Forster.

To Jacob Spangler, Esq., } P^r Jⁿ Hayes, Cor.
Surveyor General Penn^a. }

The following office rights are for the same land as above.

Appl^{ca} No. 1156, to Moses Scott
" " 205, to Josiah Matlack. Tho^s Forster Pat^d

IN TESTIMONY that the above is a copy of the original remaining on file in the Department of Internal Affairs of Pennsylvania, made conformably to an Act of Assembly approved the 16th day of February, 1833, I have hereunto set my Hand and caused the Seal of said Department to be affixed at Harrisburg, this thirtieth day of September, 1908.

Henry Howard
Secretary of Internal Affairs.